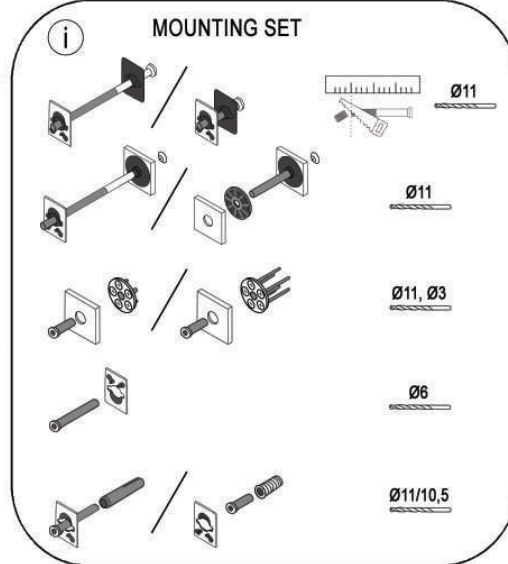
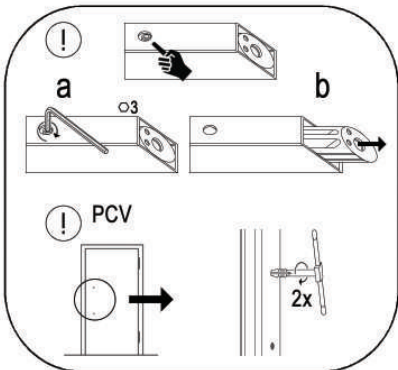
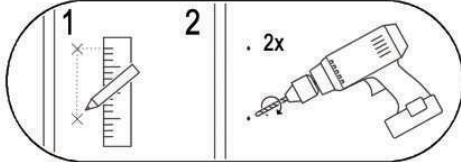
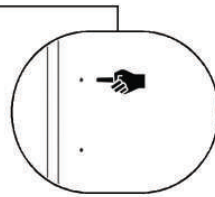
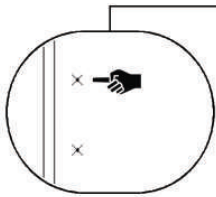
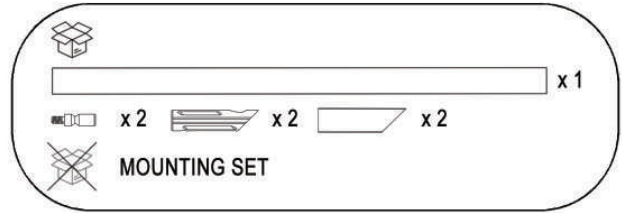




INSTRUCTIONS FOR
INSTALLATION OF
WALA Q45 HANDLE



GO TO

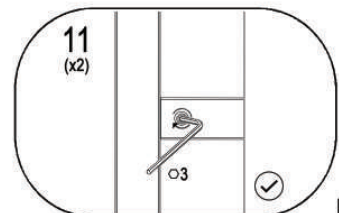
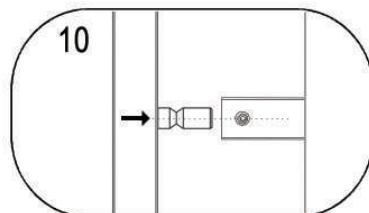
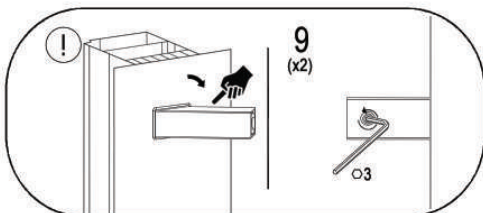
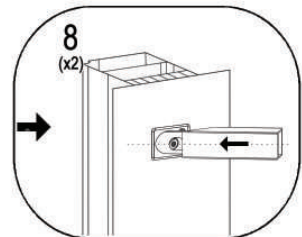
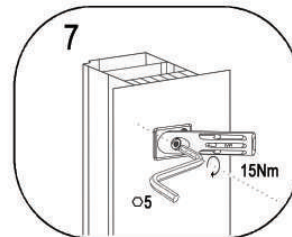
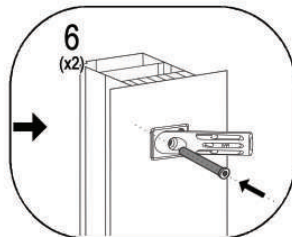
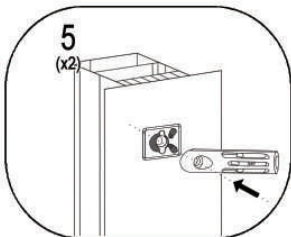
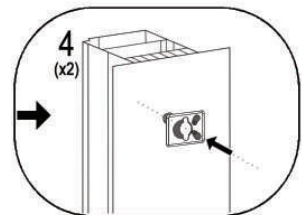
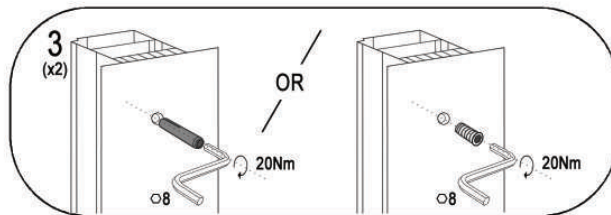
→ 4-6 (p.1) →
→ 27 (p.2)

→ 18 (p.2)

→ 12 (p.2)

→ 4 (p.1)

→ 3 (p.1)





INSTRUCTIONS FOR
INSTALLATION OF
WALA Q45 HANDLE

